



Volume 5 • Number 3 • May 2024

Beach Shop

A TEES PLEASE COMPANY



(772) 245-8940

9128 B SE Bridge Road Hobe Sound, FL

www.hobesoundbeachshop.com

Hobe Sound Beach Shop's Turtle Times

Our History is a Treasure: Chapter Twenty-Nine *By Jan Otten*

SnapCRACK, SnapCRACK, SnapCRACK, — the sound of Florida's cowboys' whips as they rounded up cattle from the miles of open plains and hammocks, the rivers, and streams of the harsh environment of the peninsula now known as Florida. Those whips were generally made of 10 to 12 feet long braided leather. The snapping of those whips in the air made a loud CRACK sound that brought stray cattle back into the herd and earned the cowboys the nickname of "Florida Crackers." By the same token, the cattle were referred to as "Cracker Cattle or Cracker Cows" and the horses the cowboys rode were rugged and small in size and often called "Cracker Ponies."

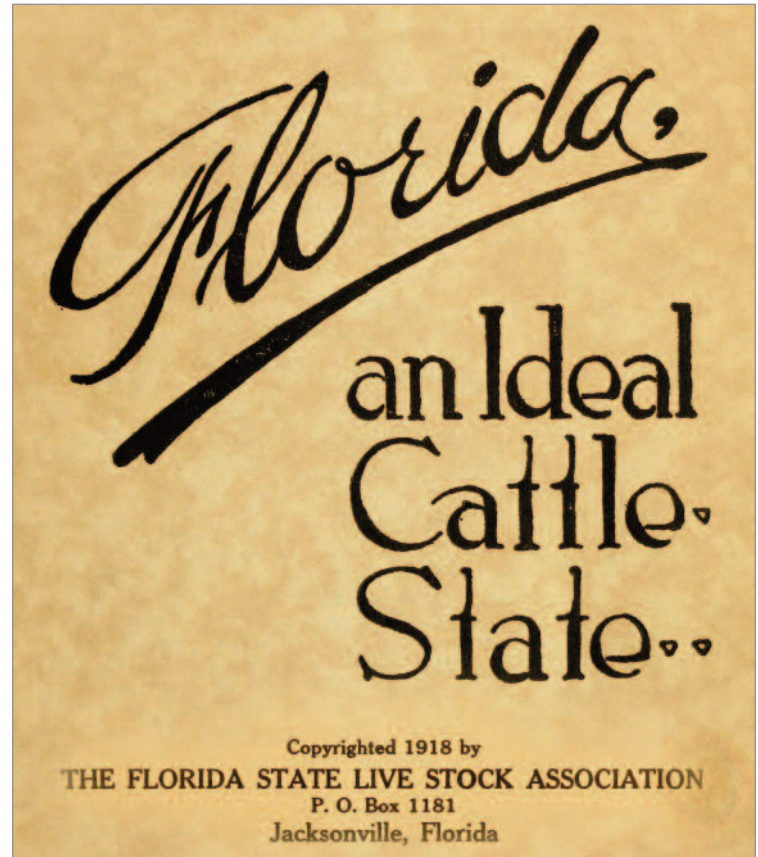
According to Florida farmers and ranchers, "The Real Florida" is not theme parks, beaches, oranges, or even Snowbirds. No siree, it's cattle! When you drive out Bridge Road in Hobe Sound towards the Interstate surely you note there the open pastureland with cattle leisurely grazing. There is a long and interesting history that surrounds the herds of Florida cattle, their Cracker Cowmen, and their whips.

Florida's cattle industry is vital to the state's well-being. Ranching is an essential economic entity that preserves many aspects of the natural landscape, protects water resources, and maintains areas used by wildlife or enjoyed for recreation.

Florida is America's oldest cattle-raising state. When Spanish explorer Juan Ponce de Leon first discovered this land in 1513, he noted the wide-open green spaces. When he returned in 1521, he brought with him to the abundant pastureland horses and long-horned Andalusian cattle.

It was no easy task for the Spanish settlers to raise cattle in the harsh environment. There were Indian raids and mosquitos to contend with. And there were cattle fever ticks, storms, swamps, and snakes, but despite the many hardships, by the early 1700s there were dozens of ranches along the Panhandle and the St. Johns River.

When the Spanish left Florida, they left behind to run wild most of their horses and cows. The cattle roamed about in the wild swamps and prairies until along came the early settlers in about 1763 and the "Cracker Cowboys" and the eventual domestication of the "Cracker Cattle." The Seminole nation also captured and raised those cattle. By the 1800s the Indian tribes possessed extensive herds.



Florida State Live Stock Association Booklet published in 1918. Florida, an Ideal Cattle State. Jacksonville, Florida. Library of Congress.

Over the 500 years since Ponce de Leon those animals adapted to the inhospitable environment which made them a Florida-specific breed. Cracker Cattle are relatively small ranging from approximately 600+/- to 1,000+/- pounds. They are heat tolerant, resistant to parasites, and able to graze on the relatively low-quality forage found in Florida's natural areas.

Continued on page 5 **1**

Real Estate Corner

According to the National Association of Realtors at the end of 2023 in the major market areas of the United States, Single-family existing-home sales prices climbed in 86% of measured metro areas—189 of 221—in the fourth quarter, up from 82% in the previous quarter. The national median single-family existing-home price rose 3.5% from a year ago to \$391,700. Here in Hobe Sound the median single home price was \$502,450.

In Hobe Sound Florida, owning your own home is a solid investment as we have seen a steady increase in market value and demand for many years past and I predict it will continue into the future. We are unique and blessed with the location of our small seaside-based community, without the heavy influence of large manufacturing plants and large commercial business. Yes, our traffic increases with the winter months but having lived in big cities we have little to complain about.

Last year ended well in the Real Estate market as we had 3.5 months of inventory on hand. A balanced market where there are

equal numbers of homes for sale as there are buyers looking to buy would be in the range of 3 months of inventory. I do not have statics for the month of January or February as yet, but the sales and listings in our Hobe Sound office are encouraging.

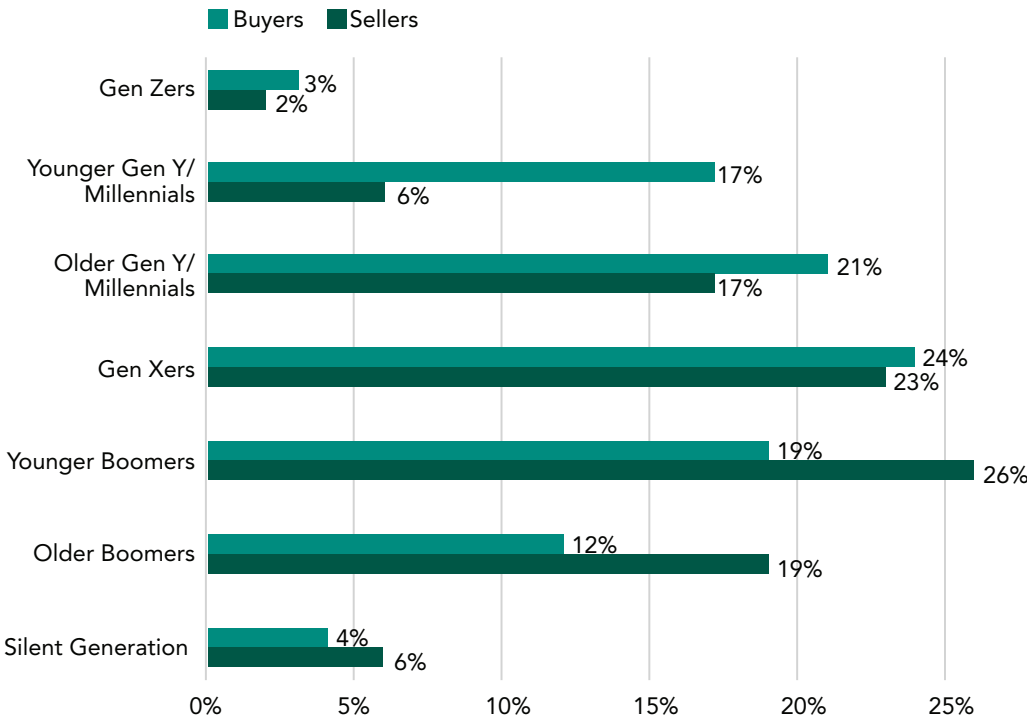
Just as the ocean tide comes in and out and the sun rises and sets people will always be moving in and out of Hobe Sound and the Real Estate Market will continue to change but remain constant. If you are planning on relocating a Professional Licensed Realtor can be of great assistance.

Just sayin! Rich

Rich Otten, PSA, C2EX
 The Keyes Company
 5693 SE Crooked Oak Avenue
 Hobe Sound, FL 33455
 561-385-3715
 richardotten@keyes.com



Share of Buyers and Sellers by Generation



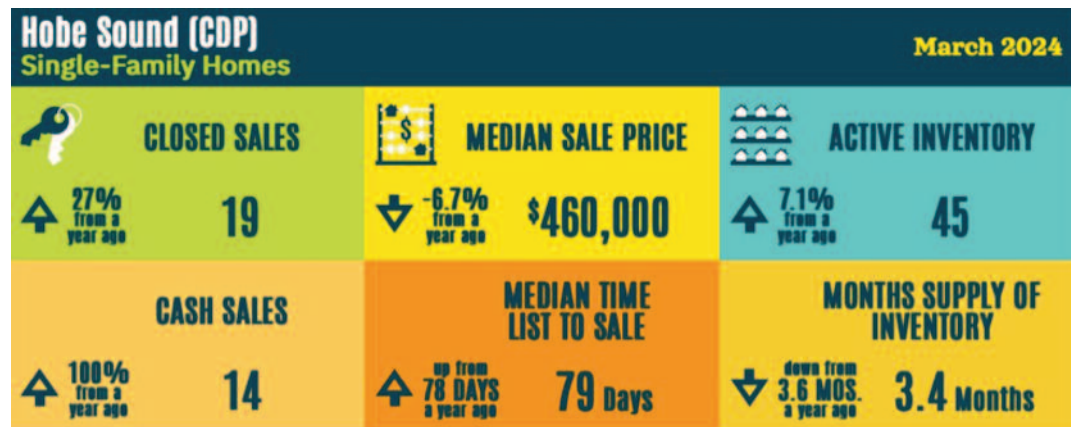
© 2024 NAR Home Buyers and Sellers Generational Trends



- Real estate agents and brokers remain the top home buying and selling resource for all generations.
- While the internet is being utilized throughout the home search, buyers continue to need the help of a real estate professional to help them find the right home, negotiate terms of sale, and help with price negotiations.
- Agents remain the most used information source in the home search, followed by mobile or tablet search devices.
- Sellers, as well, turned to professionals to price their homes competitively, help market their homes to potential buyers, sell within a specific time frame, and find ways to fix up their homes to sell them for more.

Some Hobe Sound Statistics

Our market is strong and stable. Home prices dipped slightly but not by much. Demand for the quiet lifestyle of Hobe Sound is high. At the end of March 73.7% of homes closed were cash sales. The time from listing a home for sale until it closed is 79 days (one day longer than March 2023)



Summertime in Hobe Sound

Most of the snowbirds have departed, the heat and sunshine are here to stay. Here at the HOBE SOUND BEACH SHOP we are celebrating our friends and neighbors with some serious savings and specials.

Check out our amazing "little" shop on Bridge Road in the HOBE SOUND SHOPPING DISTRICT. We are family owned and locally operated

Have you seen the eco-friendly Hemp Hats handcrafted from fiber, to spool, to loom entirely in the foothills of the Himalayan Mountains in Nepal.



FLOJOS
Just Hangin' Out - Since 1972



Check out our new men's Flojos Hammock Comfort you can count on

Tommy Bahama Men's and Women's wear at great savings. Tommy Bahama beach chairs, beach umbrellas, and beach coolers are always available. Their style and quality can't be beat.



C'mon Down To 9128 SE Bridge Road (Look for the palm trees on the roof).

Our Famous Selection of Custom Tee Shirts always at great prices and special offers. Our minimum Custom Tee Shirt Order is ONE

June Special

Buy 25 custom printed tees for your business and get 5 custom hats free. Details online and in store.

We have everything for your summer fun, fashion and savings.

Hey there...

Are you retired, but want to continue to learn new things, meet new people, and have some fun, but without a huge commitment?

Are you a young professional, climbing that ladder to success, but lack confidence and in need of some leadership skills?

Are you a young adult, just starting out in the workforce and want to continue your education while having time to pursue your goals?

Are you a parent with youngsters and you'd like to feel more confident when communicating with them?

I've got a suggestion for each of you!! Right here in our community of Hobe Sound is a wonderful, 100-year-old



Table Topics winner George Strasdas explains the meaning of the Oreo Cookie to General Evaluator Barbara Strasdas.

organization that offers all of these opportunities with a low bi-annual fee, a very reasonable time commitment, a most convenient location, populated by friendly and interesting people in a very supportive atmosphere, all with the added bonus that it's fun! Hobe Sound Toasters, Club #1206922, is one of over 14,200 clubs around the world encompassing about 270,000 members. Toastmasters International was founded in the year 1924 by Dr. Ralph C. Smedley. He realized that young men of that time needed to learn skills to make them more confident and able to present themselves well in the working world. He founded Toastmasters in a YMCA in Santa Ana, California. That club, Club #1, still exists. Smedley's program flourished after a few tries, and it has spread throughout the U.S. as well as around the world in 148 countries. Each club follows essentially the same format and the outcome for those who participate is amazing.

It has evolved with time and come up to speed with computer generated programs but still follows the original format and intent of Ralph Smedley. It is hugely successful as a bridge to education, self-confidence, and fun.

Some clubs meet for breakfast, some for lunch or dinner, but our Hobe Sound Toasters is an evening meeting on the 2nd and 4th Tuesdays of every month from 7pm to 9pm. It starts and ends on time (that's part of the discipline of the format.) Each meeting offers the opportunity to take a role and help with the meeting, or attendees can just sit back and enjoy the event as it unfolds. There are other occasions to meet in larger groups for conferences and contests, but that is strictly up to the individual to attend or not as they see fit. The Hobe Sound Bible College has been very generous over the years since 2008 when our club was founded to allow Toasters to use one of their classrooms to hold meetings. The Hobe Sound Toasters is open to the public. Guests are always welcome to visit a couple of meetings to see if it is something they would like to become part of. Should they decide to join there is a small fee to be a member that is collected two times a year, April 1st and October 1st. Should anyone decide to become a member in between those dates the fee is determined based on the date of joining. Hopefully this has piqued your interest. Come visit and see what you think. You are certain to be impressed and want to be part of this interesting group of your neighbors right here in Hobe Sound. People from areas surrounding Hobe Sound are also welcome.

A book cover for 'The Art of Jimmy Tsutomu Mirikitani: Exhibition Catalogue A Traveling Exhibit of the Wing Luke Museum' by Diane Freaney, published by Emerson House Press. The cover features a photograph of Diane Freaney holding a book. It also includes a 'Coffee Table Book' badge and a 'Bronze FAPA' award logo. A red banner at the bottom of the book cover reads 'Florida Authors and Publishers Association President's Book Award Winner'.

D&J Art Studio LLC
ART CLASSES
3832 S.E. Dixie Hwy
Stuart FL 34997
267-315-1182

The logo for Hobe Sound Toasters, featuring a globe with the text 'TOASTMASTERS INTERNATIONAL' overlaid.

Hobe Sound Toasters
Club #1206922 of Toastmasters International
Richard W. Otten, DTM
President Emeritus/Founder

Public is invited

- Become a More Effective Communicator
- Sharpen Management Skills
- Develop Leadership Potential
- Reduce the "Public Speaking Butterflies"
- Learn to Speak with Greater Confidence

For more information about Hobe Sound Toasters contact Richard Otten
Tel: 561-385-3715 or Email: dancensound1@gmail.com
Visit 1206922.toastmastersclubs.org

For more information about Toastmasters International
Visit www.toastmasters.org

Our History is a Treasure: Chapter Twenty-Nine *continued from page one*

Cattle rustling was prevalent throughout the state during the second half of the 18th century. Europeans, Americans, and Indians stole cattle from each other. Principally because Florida was an open range the cattle roamed freely with virtually no fenced pastures.

Along with the "whip," the Cracker Cowboys relied on dogs to move the cattle along. These tough animals would help get a cow out of a marsh or work a hundred steers into a tidy group. Known as the Florida Black Mouth Cur it is a specific breed of cur and are sometimes called the Cracker Cur because of their close ties with the early Florida Crackers. Black Mouth Curs are primarily herding dogs, able to hunt big or small game, but they are also suitable as family dogs. Florida cowboys, unlike their western counterparts, did not use lassos to herd or capture cattle. It is said of those rough riders of Florida's first ranges, "a good dog, a horse, and a whip were all the tools a true Cracker needed!"

Eventually the cattle ranchers began to move south in search of more grazing land. They moved through Alachua County into the Kissimmee valley and on to the surrounds of Lake Okeechobee. The railroads stretched into Florida and could ship cattle and the beef industry grew. The ranches drew more people from other states, new towns arose and there was work for blacksmiths, shopkeepers, and cowboys. In 1845 when Florida became part of the United States the territory was described as a "vast, untamed wilderness, plentifully stocked with wild cattle." These hardy Cracker Cattle were descended from the mix of Spanish and British breeds.

It was a different Florida then – before cities, before tourists, before high-rise buildings and superhighways, it was the cattle ranchers and farmers who became true stewards of the land. Many of these ranchlands have been preserved by multigenerational families dating back hundreds of years and who continue to raise cattle on those vast acreages.



Full size cow statue donated by the Hobe Sound Farms on Bridge Road for a Stuart/Martin County Chamber of Commerce event auction.

May 23 is World Turtle Day **Lessons from THE TURTLE**

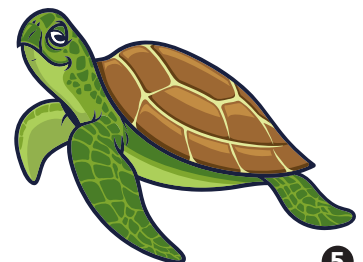
The turtle is a symbol of strength and perseverance. The turtle can endure many things, but never gives up. Turtles are also a symbol of longevity and strength, like the turtle, people can endure all the challenges in life and still be strong.

Some cultures view the turtle as a symbol of spiritual rebirth and transformation. The turtle has the ability to submerge underwater and then resurface, which represents renewal and spiritual protection.

In other cultures, it is associated with wisdom and patience. The tortoise is believed to have the ability to live a long time and thus has accumulated great wisdom throughout its life. It represents the idea of taking things easy, being patient and learning from experiences.

The Turtle possesses wisdom and is an intuitive thinker. While the Turtle may not use very many words, when they do speak, you should listen. The Turtle has a keen insight and the ability to make strong effective decisions, especially during a crisis. Generally, they do not panic.

Some folks believe that if you see a turtle by the roadside and you rescue it, sending it on its way safely in the same direction it was headed, that your crown in heaven gets a little bit shinier.



During the 1600s, Spanish clergy raised cattle at the missions, where many Native Americans learned to tend them. Florida Seminoles have been raising cattle since at least the 1700s and 1800s. The earliest Florida cowboys were native people, and they continue today to be a major player in the cattle industry. During the 1700s their great leader known as "Cowkeeper" owned herds that numbered many thousands of heads of cattle. Sadly, most of those historic herds were all but wiped out in wars against the Seminoles in the 19th century – nearly taking out the tribe as well.

In the days of the Civil War, Florida became a chief supplier of cattle to the Confederacy mostly for meat and leather. Due to the great demand for beef during this time many herds in Florida were depleted. For the most part, herds in South Florida were not affected and Cuban trade became a very lucrative endeavor heralding in Florida's vast agricultural industry. In the days of the Cracker Cowboys Cracker Cattle were driven from all over Florida to Tampa to be loaded onto ships and transported to Cuba in exchange for gold. It was no easy task, but with their whips, trusty dogs, and Cracker ponies they endured. During the 1890s cow camps were used to bring cattle together into one central area to prepare for transporting. Because the cattle were free to roam all over the state, brands and earmarks were used to identify ownership of individual cattle.

In the 1930s on the Seminole 36,000-acre Brighton reservation, with an abundance of grassland and natural roughage came the beginning of the modern cattle herd. That was before the Seminole Tribe of Florida in 1957 was federally recognized and incorporated. The Seminole people were enticed to the Brighton location by the U.S. government who worked with the native people to raise cattle thereby bringing to the reservation cattle from the Apache Mescalero reservation. Unfortunately, many of that breed of cattle died unable to flourish in the harsh sub-tropical environment. It took decades of trial and error, different breeds, and better genetics for the Seminoles to get the high-quality breeds they now have. Their breed is called "Brangus," a cross between Brahman and Black Angus. They bear tags in their ears that trace their lineage.

In a January 2021 report according to the Florida Beef Council, Florida has approximately 15,000 cattle producers, with the Florida Department of Agriculture and Consumer Services reporting 1.69 million head, including dairy cattle. Half of Florida's agricultural land is devoted to cattle production.

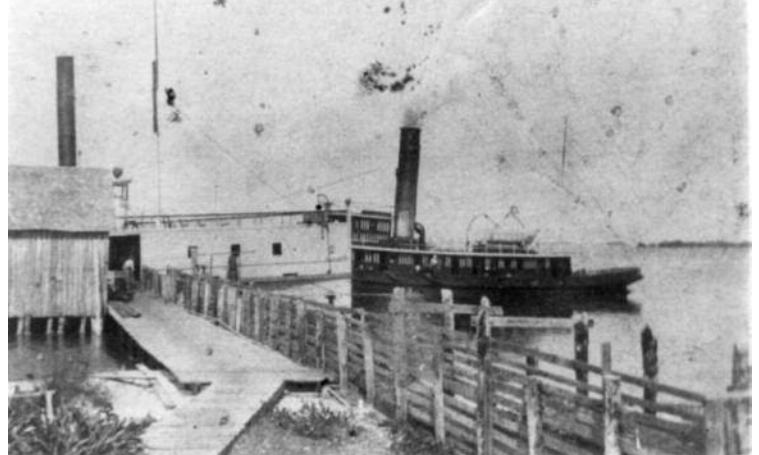
The most productive cow-calf ranch in the U.S. is located 50 miles southeast of Orlando International Airport and 19 miles



Seminole Indian cowboy Charlie Micco and grandson Fred Smith on horseback in a cattle ranch - Brighton Reservation, Florida. 1950-08. State Archives of Florida, Florida Memory.

6

west of Cape Canaveral. This is the Deseret Ranch owned by Farmland Reserve, Inc. an entity related to The Church of Latter-day Saints. Their over 300,000 acres, approximately 450 square miles, spreads over 3 central Florida counties with 90 ranchers and their families living on the property. There are approximately 44,000 head of beef cattle surrounded by 1,400 miles of barbed wire fencing. According to Wikipedia, in 1997 it was the world's largest beef ranch. The church does not make public its revenue or valuation, however according to real estate sources the estimated value of its ranchland is in excess of \$858 million dollars. It is known that in 2000 they moved 16 million pounds of calves, about 7,300 head, which translated to about \$16 million in revenue.



Wharf where cattle were hurriedly pushed along chutes and crowded into every available spot on board schooners that plowed the waters between Punta Rassa, Tampa, St. Andrews Bay, Charlotte Harbor and Cuba. Many ships carried 200 head or more per trip. Steamship at wharf - Punta Rassa, Florida. 1890 (circa). State Archives of Florida, Florida Memory.

Deseret was founded in 1950 and is known to be "a good steward of the land" producing cattle, citrus, and timber while simultaneously managing the long-term viability of wildlife populations. The name "Deseret" comes from the Book of Mormon and means "Honeybee."

By comparison, the average Florida cattle ranch is 450 acres. At the farthest west end of Bridge Road is the 3,902-acre *Calusa Creek Ranch. This property with its century-old oaks and pines, lush palms, freshwater marshes, and towering cypress domes is home to 300+ head of Brangus cow-calf pairs who have a high tolerance for heat, humidity and insects. And just west of I-95 on Bridge Road is the 126-acre Hobe Sound Farms encompassing cattle ranching, a variety of vegetables and fruits growing there, and a wonderful weekend farmer's market. Close to Hobe Sound, sitting just west of the St. Lucie River on SW Martin Commons Way in Palm City, is the Seven Oaks Ranch with 10 acres inhabited by Hereford cattle, Kune Kune Pigs, miniature donkeys, chickens, and Nigerian Dwarf Goats. They also grow 80 varieties of fruits, vegetables, and flowers. The owners proudly proclaim their ranch as an "holistic ecosystem."

There is a great deal more to learn about the \$500-million-a-year cattle ranching industry in Florida. If your interest has been piqued, there are a variety of sources, some of which are listed below, where you can read and learn more.

Note: *The Calusa Creek Ranch is currently being considered for development with single family homes and a golf course. This project has been placed before the County Commission for consideration.

To contact local ranches for information, tours, or to hold events at their location:

HOBE SOUND FARMS

info@hobesoundfarmersmarket.com or
hobesoundcattleco.com
www.hobesoundfarmersmarket.com



CALUSA CREEK RANCH

info@calusacreekranch.com
www.calusacreekranch.com



SEVEN OAKS RANCH

info@thesevenoaksranch.com
www.thesevenoaksranch.com



Some references for this Chapter include:

- fcit.usf.edu/florida/lessons/cowboys/cowboys.htm
- Florida Cracker Cattle Association
- Florida Memory Archives
- allaboutbirds.org
- livestockconservancy.org
- Florida Agricultural Hall of Fame
- Florida Beef Council
- Wikipedia
- And more....



Seminole Indian cowboys herding cattle in the pasture - Brighton Reservation, Florida. 1950. State Archives of Florida, Florida Memory

Some trivia of interest:

- The original "Cracker Cattle" breed, now considered a special breed, is raised by only a few ranchers. The Florida Cracker Cattle Association was created to preserve these cattle that were so important to the agricultural history of Florida and that provided the foundation for today's cattle industry.
- Florida Cracker Cattle being a Florida-specific breed must have no features of other breeds. In particular, Brahman breeding which would include large ears, any evidence of a hump, excess skin, especially in the throat, triangularly shaped head and excessively heavy horns or small crumpled horns, similar to Jerseys. The width and shape of their horns determines true Cracker Cattle. They must not go out too wide from the head before going up.
- In the 1970s, then Commissioner of Agriculture, Doyle Conner, determined that it was important to endeavor to save Florida Cracker Cattle from extinction and asked for contributions of Florida Cracker Cattle to start a state-owned heard. Some ranch families contributed heifers and bulls and the herds have been selected over the years to maintain the historical size, coloration and spotting, and horn shapes of the cattle of the 1800s. Pictures of Florida Cracker Cattle from as early as 1908 are in existence and have provided useful guides during the selection process.
- Cracker Cattle typically have adequate milk-producing abilities but are more commonly raised for their meat.
- Biggest natural predator of Florida cattle is lightning. Also, the Florida panther and black bear are potential predators of livestock, and both are legally protected.
- To get a good feel for life in the early days of the Cracker Cowboy, read *A Land Remembered* by Patrick D. Smith. A powerful story of historical fiction spanning three generations of one family from 1858 through 1968 and explores the history of Florida. It is considered a "must read" for anyone interested in Florida's history and the rich culture of its ranching communities. Highly recommended.
- According to the Florida Beef Council, today there are more than 886 thousand head of cattle and 15,000 beef producers throughout the state and Florida currently ranks 13th in overall cattle numbers nationwide.
- Cattle Egrets are white birds often associated with cows and large farm animals. They hang around the animals, even sometimes standing on top of them, and wait for the cow to disturb an insect or frog.



Cattle Egret
Venkata Sai Goutham Vaddi

Chapter Twenty-Nine

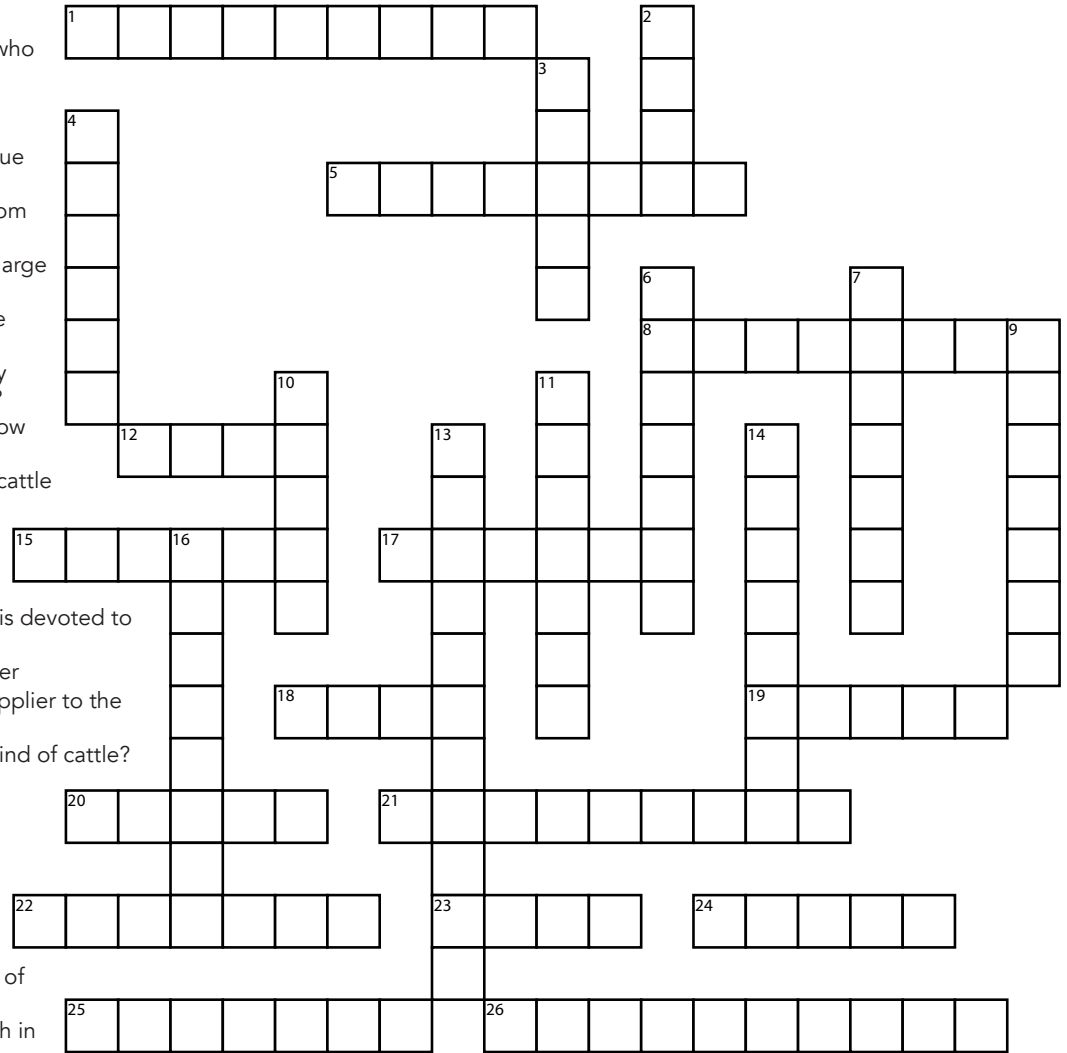
Hint: All Answers Can be Found in the Chapter Twenty-Nine article.

Across

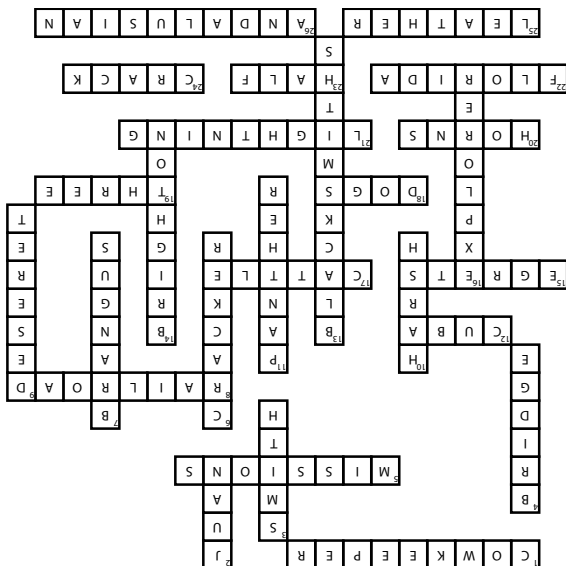
1. What was the name of a Seminole leader who raised cattle in the 1700s?
5. What institutions helped the early Native Americans learn to raise cattle?
8. The cattle industry grew in Florida partly due to what?
12. What country exchanged gold for cattle from Florida?
15. White birds that gather around cattle and large farm animas are Cattle ?
17. What do the Florida ranchers believe is the "Real" Florida?
18. Besides their whips, what else did the early cowboys have to help with their round up?
19. The book "A Land Remembered" spans how many generations of one family?
20. What part of the Florida-specific breed of cattle must not be too wide?
21. Biggest natural predator of Florida Cattle?
22. What is the oldest cattle-raising state?
23. What portion of Florida's agricultural land is devoted to cattle?
24. Sound that brought the stray cattle together
25. During the Civil War Florida was a chief supplier to the Confederacy of meat and what?
26. Ponce de Leon brought horses and what kind of cattle?

Down

2. Ponce de Leon's first name?
3. Last name of the Author of "A Land Remembered", Patrick D. _____?
4. Road where Hobe Sound Farms is located?
6. Name for early Florida cowboy
7. Name of the current breed of cattle that is of high-quality?
9. What is the name of the largest cattle ranch in Florida?
10. The Spanish settlers found Florida's environment to be very what?
11. Animal predator of Florida cattle are the black bear and what other animal?
13. The ranches drew cowboys, shopkeepers and what to Florida?
14. What is the name of Seminole reservation where cattle ranching is prevalent?
16. Ponce de Leon was a Spanish what?



Chapter Twenty-Nine Answers



TREASURE HUNTERS

Call for information
Rev. Jeff & Rev. Mary Williams

772-631-7550

The Framery INC.

Art Restoration

Cynthia L. Cooper 8946 SE Bridge Road
 Proprietor Hobe Sound, FL 33455
 772-546-3424
 theframeryinc.net

Custom Framing Doesn't Need to be Expensive!

The Atlantic hurricane season, which includes the Caribbean Sea, begins June 1 and runs through November 30. Based on the records from the last one hundred years, tropical cyclones affect Florida with greater frequency than any other location in the United States. During the past four years, four hurricanes have made landfall in Florida.

HURRICANE CATEGORIES SAFFIR-SIMPSON SCALE



74-95mph

- Roof damage
- Large branches will snap & trees may topple
- Potential damage to power lines



96-110mph

- Major roof damage
- Trees will be snapped or uprooted
- Near-total power loss is expected



111-129mph

- Household structure damage
- Trees will be snapped or uprooted
- Electricity & water will be unavailable for days to weeks



130-156mph

- Severe household structure damage
- Trees will be snapped or uprooted
- Power outages will last weeks to months



157+ mph

- Extreme household structure damage
- Fallen trees will isolate residential areas
- Power outages will last weeks to months

FLORIDADISASTER.ORG/PLANPREPARE



**HOBE SOUND COMMUNITY
PRESBYTERIAN CHURCH**

The Heart of Hobe Sound

SUNDAY MORNING WORSHIP at 10:30 a.m.

**WE are YOUR Community Church
All Visitors Welcome**

Chair Yoga: Tuesday, Wednesday & Thursday at 10:00 a.m.

Light Weight Training Classes: Wednesday at 9:00 a.m.

A Heart for Handwork - A Sewing Circle: Thursday at 1:00 p.m.

Bible Study: Tuesday at 11:00 a.m.

Art Classes with Debra Monet by appointment

Mission Dinners: 2nd Friday each Month

Fenced Dog Park

**WE ARE ON FACEBOOK LIVE
every Sunday morning at 10:30 a.m.**

Give us a call or visit our website for more information.

(772) 546-5043

www.heartofhobesound.org

11933 SE Juno Crescent • Hobe Sound, Florida 33455

BRIDGE ROAD FINE ARTS



- Oil
- Acrylic
- Water Color
- Mixed Media
- Wood Art
- Ceramics
- Photography

8887 S.E. Bridge Road
Hobe Sound, FL 33455

(in the Winn Dixie Plaza)

Phone: 772.285.2085

Ed Douglas, Proprietor

Your Business is Personal to Us!

Hours: Tuesday thru Saturday 11 - 4

Enter the Fab Four

Thank You Sir May I Have Another

According to Brian Swint from Barron's, in the first quarter of 2024, the S&P 500 had its best first three months since 2019, gaining more than 10%. Since 1961, the market has gained at least 9% in the first quarter 13 times. It went on to rise again in the second quarter nine of those times and finished the year higher in every instance but one. With the S&P 500 up over 20% in 2023, a fair question to ask is will it happen again? Back to back returns of over 20% are rare. Except for the period from 1995 to 1999, it only happened 2 other times since 1928 according to macrorends.net.

Party Like it's 2029

In the mid to late 1990s the S&P 500 experienced an unprecedented 5 consecutive years of market gains, with 4 out of 5 years returning over 20%. 1999 trailed the other 4 years with a respectable 19.53% return. Is this the new 1990s? It's hard to say since the rally in 2023 was driven by 7 stocks that grew double and triple digits. Now they make up 29% of the S&P 500 "Enter The Magnificent 7". According to David Thomas of Forbes these 7 stocks "grew to the largest concentration the S&P 500 has ever had". If you removed these 7 stocks, the 2023 return would be 8% instead of 26% according to Mr. Thomas. 8% is still good and certainly within the range of historical returns. Will the 2020s be like the 1990s? It may be premature to party like it's 1999 (kids ask your parents about the artist formally known as "Prince")

The Fab Four (You May Want to Ask Your Grandparents...)

I want to hold your hand, or maybe the 4 stocks left from the magnificent 7. "The Magnificent Seven trade is beginning to fizzle—and yet, the stock market is still heading higher," says

the Wall Street Journal in the April 1st edition. The S&P 500 climbed 10% in the first quarter led by the newly dubbed Fab Four. The Fab Four are responsible for nearly half of the S&P 500's first-quarter advance, according to Howard Silverblatt, senior index analyst at S&P Dow Jones Indices. It is good to see the market still rally without stocks like Apple and Tesla. The former members of the Magnificent 7 were both down double digits in the first quarter. This means other groups are taking part in the rally. In fact, all of the S&P 500's sectors, except real estate, logged gains in the first quarter.

Most notably, I have learned how to use National Lampoon's Animal House, Prince, and the Beatles in the same article. Very impressive!

Disclosure

The opinions voiced in this material are for general information only and are not intended to provide specific advice or recommendations for any individual. All performance referenced is historical and is no guarantee of future results. All indices are unmanaged and may not be invested into directly. Investing involves risk including loss of principal. No strategy assures success or protects against loss. Please visit our website www.planipg.com for more information and useful tools. LPL Tracking #562458



Steven W. Landwersiek

Investment Planning Group
6530 S Kanner Highway
Stuart FL 34997
772-233-4315
www.laaipg.com



**Investment
Planning
Group**



740 SE Indian Street
Stuart, FL 34997
772-233-4315

Steven W. Landwersiek
President-Investment Planner
LPL Financial Advisor



Areas of Focus

Investment Planning and Portfolio Management • Risk Management
Retirement Planning Strategies • Planning for Charitable Giving
Estate Planning Strategies



**MARTIN COUNTY
PROPERTY APPRAISER**
Jenny Fields, CFA



MARRIED? DIVORCED? WIDOWED?

A change in marital status can greatly affect the property tax savings you benefit from with the Homestead Exemption. To learn more, please scan the QR codes to view our informational handout and video.



Video



Handout

“We VALUE Martin!”

Website: pa.martin.fl.us • Email: info@pa.martin.fl.us • (772) 288-5608



PEST SOLUTIONS INC.
"RELIABLE AND AFFORDABLE"

PEST SOLUTIONS INC.
P.O. BOX 1664
HOBE SOUND, FL, 33475
OFFICE: 772-546-8918

ANTS - SPIDERS - ROACHES - FLEAS - RODENTS AND MORE.....

WWW.MYPESTSOLUTIONSINC.COM
mypestsolutions.inc@gmail.com

LICENSED AND INSURED   FAMILY OWNED AND OPERATED

Sharren McGarry
Senior Loan Originator
NMLS: 303807




Mobile 772-285-1441
Office 772-324-5292
Fax 866-719-0376
sharren.mcgarry@primelending.com
lo.primelending.com/sharren.mcgarry
729 SW Federal Hwy Suite 210 • Stuart, FL 34994
Home Loans Made Simple PrimeLending NMLS: 13649

May is Martin County Historic Preservation Month. For upcoming related events visit Martin.fl.us/historicpreservation.com or email info@discovermartin.com



Barbra Davis
REALTOR-ASSOCIATE®
c 618.920.1075
bdavis@ipre.com
barbradavis.ipre.com
9148 SE Bridge Road
Hobe Sound, FL 33455

A little Trivia from Dictionary.com:
bellwether [bel-weth-er] noun
a person or thing that shows the existence or direction of a trend; index.
Her fashion choices are considered a bellwether of upcoming trends in fashion. And guess where she buys those bellwether fashions? At the Hobe Sound Beach Shop of course!!



Hobe Sound Beach Shop

A TEES PLEASE COMPANY 

9128 SE Bridge Road Hobe Sound, FL 33455



You can ride a
turtle or recline
on a pineapple
in a pool!

Fabulous fun floats
at the Hobe Sound
Beach Shop.



The shop will
be closed
July 1 – July 14.

The Seaside Siblings

Barbara Kleine McLaughlin
OWNER/CFO

George M. Kleine
OWNER/PRESIDENT/CHIEF DESIGNER

Janet Kleine Otten
MANAGING EDITOR/GENERAL MANAGER

The Seaside Sales Staff

Shareese Grace SALES, PRODUCTION, ILLUSTRATION

TJ Grace SALES, PRODUCTION

Frankie Sanders SALES

Jackie Sharifi SALES

The Seaside Everything Guy

Barry McLaughlin

The Seaside Contributing Writers

Janet Kleine Otten

Steven W. Landwersiek, CRPC, APMA

Rich Otten, PSA, C2EX

Turtle Times Distribution

Workson Louis-Jeune

Turtle Times Design

Nancy Lee, Brown Bird Studio



Read **Turtle Times**, including all previous
issues, online at hobesoundbeachshop.com



Hobe Sound Beach Shop Store Hours

Monday through Saturday 10:00 am to 6:00 pm
Closed Sundays

(772) 245-8940 • hobesoundbeachshop.com